



**Consult a doctor  
and stay home if you  
feel unwell**



**Wear  
face masks in  
all public areas**



**Don't gather  
in groups**

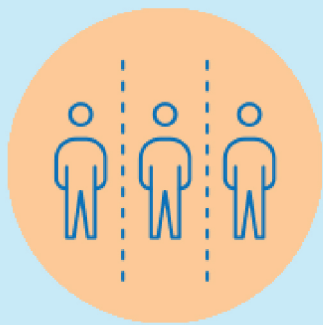


**Maintain 1,5m  
social distance  
at all times**

## **ANTWERP INDUSTRY GUIDELINES**



**Sanitize hands  
regularly**



**Respect markers  
and safety instructions**

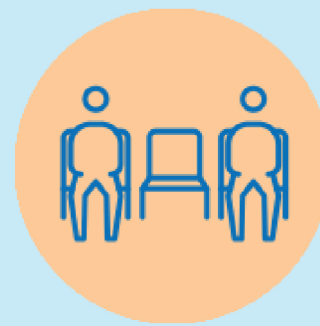


**Organize reception  
desks & provide  
sanitizing gel**

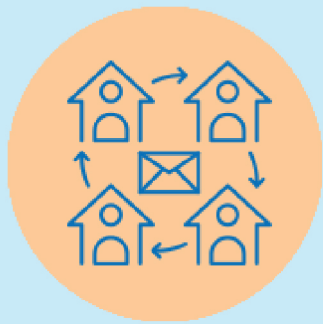
## **TOGETHER WE CAN KEEP OUR INDUSTRY SAFE**



**Regularly disinfect  
surfaces**



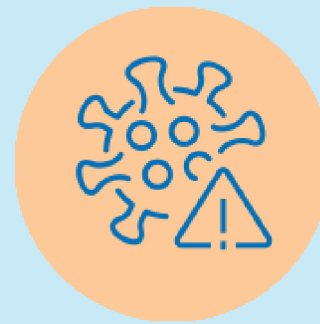
**Reorganize office space  
to comply with  
social distancing**



**Maximize  
working from home**



**Inform staff  
& visitors**



**Encourage others  
to respect the guidelines**

With the support of



for more details, contact your building owner  
download our guidelines on [www.awdc.be/supportc-19](http://www.awdc.be/supportc-19)  
or get in touch with AWDC Security Office  
via [info@awdc-securityoffice.com](mailto:info@awdc-securityoffice.com)